

DIRECTIONS TO GRACE HOSPITAL

**2201 South Sterling Street
Morganton NC 28655
(828) 580-5000**

Directions to Grace Hospital

- Directions from I-40 to Grace
- From I 40 Take EXIT 105
- Turn Right onto South Sterling Street
- BRHC Grace Hospital is located on the right at first light.

Directions from Charlotte, NC

- From Gastonia take 321 North to Hickory
- Follow 321 until you see signs for I-40 West toward Asheville.
- Take Exit #105 (Hwy. 18). Turn right from the exit ramp and travel to the next stop light (very short distance/beside Wendy's). Turn right at the light and this will take you into the Grace Hospital complex.

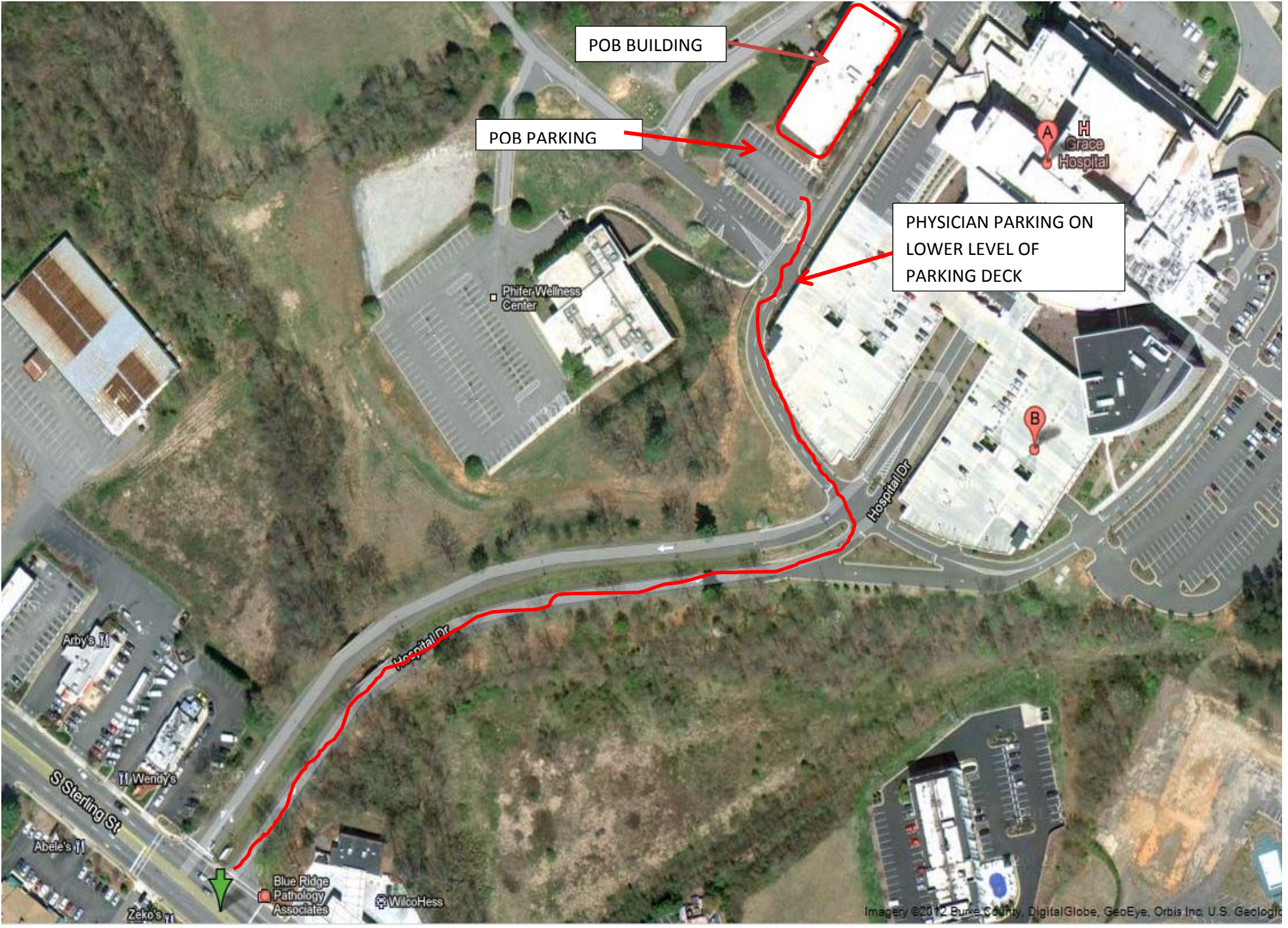
Walking Directions to the Training Rooms at Grace Hospital

➤ **Wilson Creek Training Room**

- The Wilson Creek Training Room is located on the ground level of Grace Hospital.
- When entering from the front ground level parking deck entrance, go straight and turn right at 2nd hallway on the right just before the elevators.
- The Wilson Creek Training Room will be on the right.
- See map below

➤ **POB Training Room**

- See map below



POB BUILDING

POB PARKING

PHYSICIAN PARKING ON LOWER LEVEL OF PARKING DECK

Phifer Wellness Center

H Grace Hospital

Hospital Dr

Arby's II

Wendy's

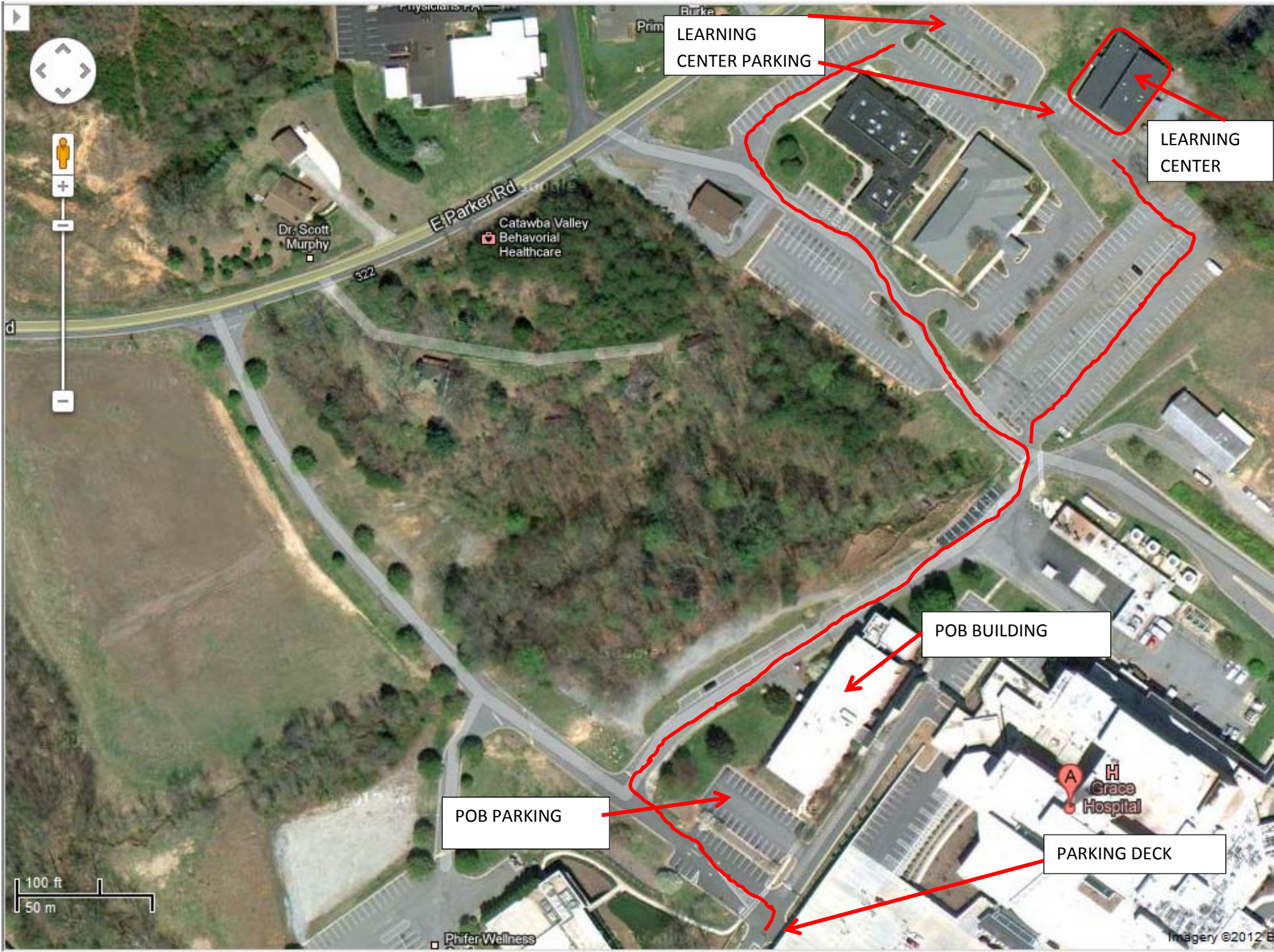
Abele's II

Zeko's II

Blue Ridge Pathology Associates

WilcoHess

Imagery ©2012 Burke County, DigitalGlobe, GeoEye, Orbis Inc, U.S. Geologic



LEARNING
CENTER PARKING

LEARNING
CENTER

POB BUILDING

POB PARKING

PARKING DECK

100 ft
50 m

Imagery ©2012 B