

# Information Security How-to - Checklist

**Type: How to** – Install Pulse client

**Team Contacts** – All – Information Security / Access Solutions Team

**Date Scheduled:** 1-18-2016 – O. Ingram

**Objectives** – Install Junos Pulse Client for SecureConnect

---

## Install the Pulse Secure Client and Set up a Profile

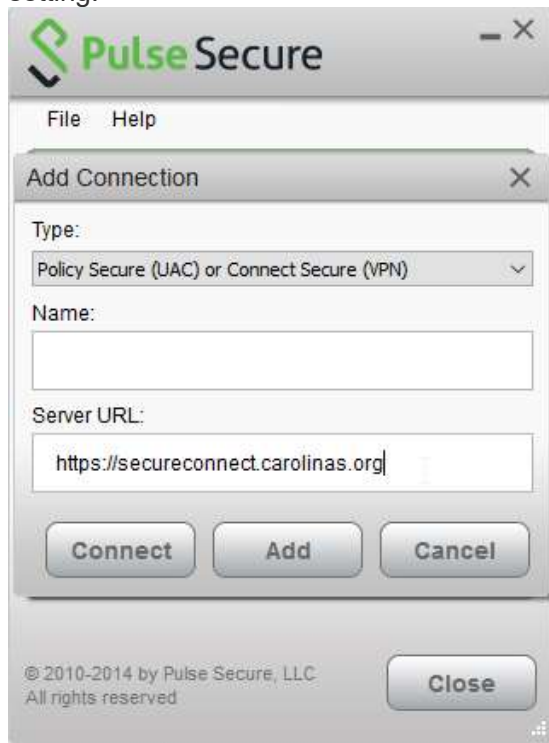
The instructions below explain how to install Pulse Secure on a laptop or desktop computer running Windows or Mac OS X.

**Note:** If you already have Junos Pulse installed, you should not need to install the newest version. The Secure Remote Access service supports older versions of Pulse.

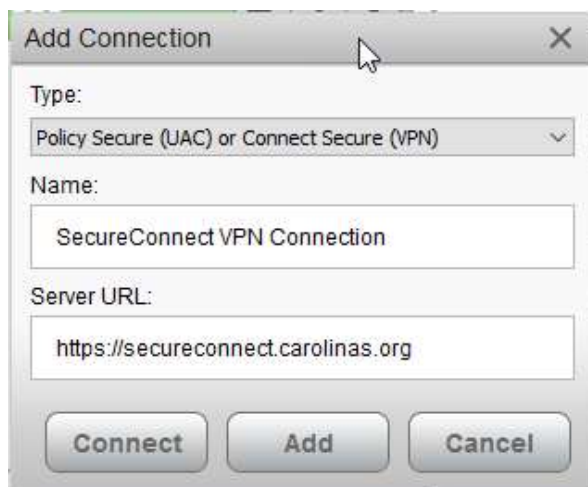
1. Open Pulse Secure. **Note:** For Windows systems, the application should be listed in the **Start** menu under **Pulse Secure**.
2. Click the plus-sign icon to create a profile. **Note:** On older versions of Junos Pulse, the plus sign is located in the lower left-hand corner of the **Connections** window.



3. In the **Server URL** field, enter **SecureConnect.carolinas.org**. Leave the **Type** field at its default setting.



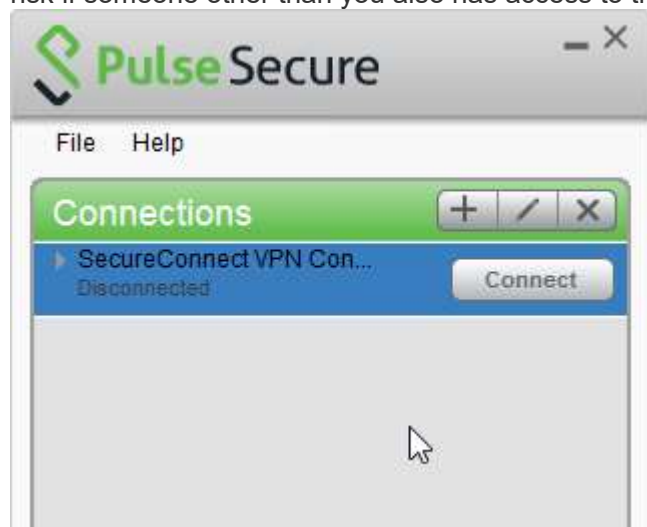
4. In the **Name** field, enter a name for your Profile (*for example*, SecureConnect VPN Connection). Click **Add** to save the profile.



## Establish a Secure Remote Session

1. Click the **Connect** button next to your profile. **Note:** In steps 2 through 4, you can save your settings with the “Save settings” checkbox. Saving your settings (which includes saving your password in step 3) will save you time when connecting in the future, but it also presents a security

risk if someone other than you also has access to the computer.



2. Enter your Username and Password.



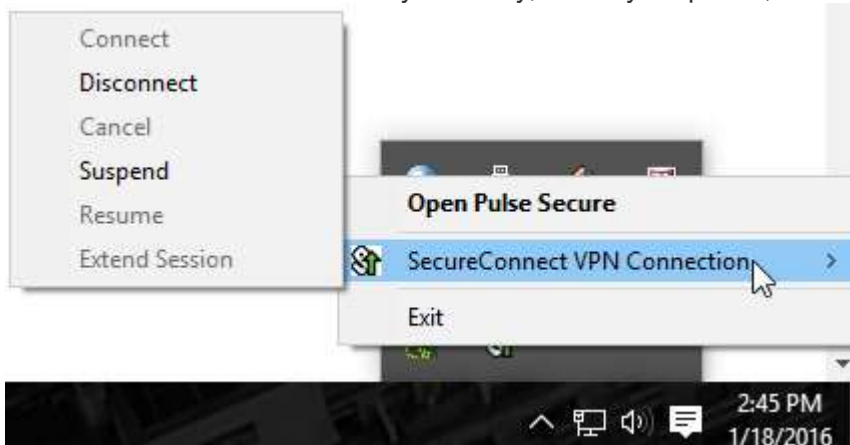
3. Select the role you wish to use for your connection. (By Default you will have the Webapps-NetConnect Role) and then click **Connect**.



4. The Pulse Secure tray icon will display with a green arrow pointing up when you have made a successful connection.



5. When you are finished, click **Disconnect** next to your profile in the Pulse Secure client. You can also click the Pulse icon in the system tray, select your profile, and click **Disconnect**.



**Tip:** You can quickly open future Pulse Secure connections by clicking the Pulse icon in your system tray, selecting your Profile, and clicking Connect.

