



Carolina's HealthCare System

Levine Children's Hospital  
Pediatric Rehabilitation Pavilion

## Our Facility

[LevineChildrensHospital.org/rehab](http://LevineChildrensHospital.org/rehab)

Our 13 bed, dedicated pediatric rehabilitation unit is located on the 4<sup>th</sup> floor of Levine Children's Hospital ( [www.LevineChildrensHospital.org](http://www.LevineChildrensHospital.org) ). All of our rooms are private with in-room sleeping accommodations for a parent or caregiver. Our Family Centered Care philosophy allows us to effectively treat the whole child and tend to the emotional and physical needs of our patients and their families.

## Our Team

The team consists of dedicated therapists, nurses, physicians as well as social work, teacher, rehab liaison and other skilled professionals. We also have direct access to the full spectrum of medical specialists found in our nationally recognized children's hospital.

Many of our nursing team members are Certified Rehab Registered Nurses (CRRN). The Pediatric Rehabilitation Program is CARF Accredited ( [www.CARF.org](http://www.CARF.org) ) which ensures we strive to meet the highest standards of quality, safety and outcomes.

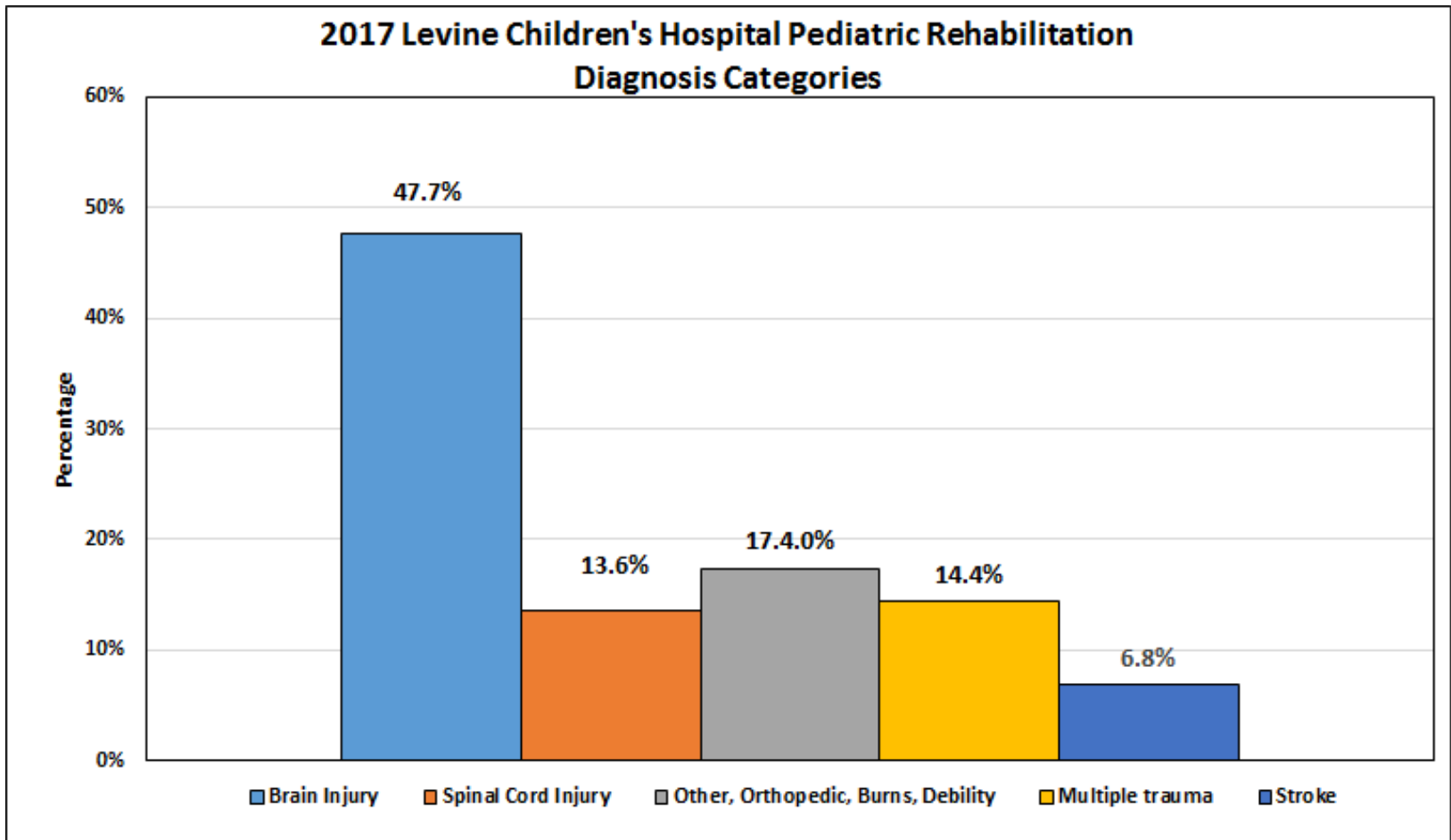
# Levine Children's Hospital Pediatric Rehabilitation Pavilion

## Our Results

In 2017, we served 161 patients from VA, GA, NC, TN and SC. Though our largest treatment diagnosis group is brain injury we also serve those with spinal cord injury, amputation, multiple traumatic injuries, oncologic disease, general decline in functional ability and many other diagnoses.

We utilize UDSmr (Uniform Data System for Medical Rehabilitation) and WeeFIM to measure and document functional performance in our patients. We are then able to benchmark our data with other facilities across the nation to be sure we are always working to provide the best care. We also collect, analyze and report other data such as referral information, discharge disposition and average treatment hours by diagnosis.

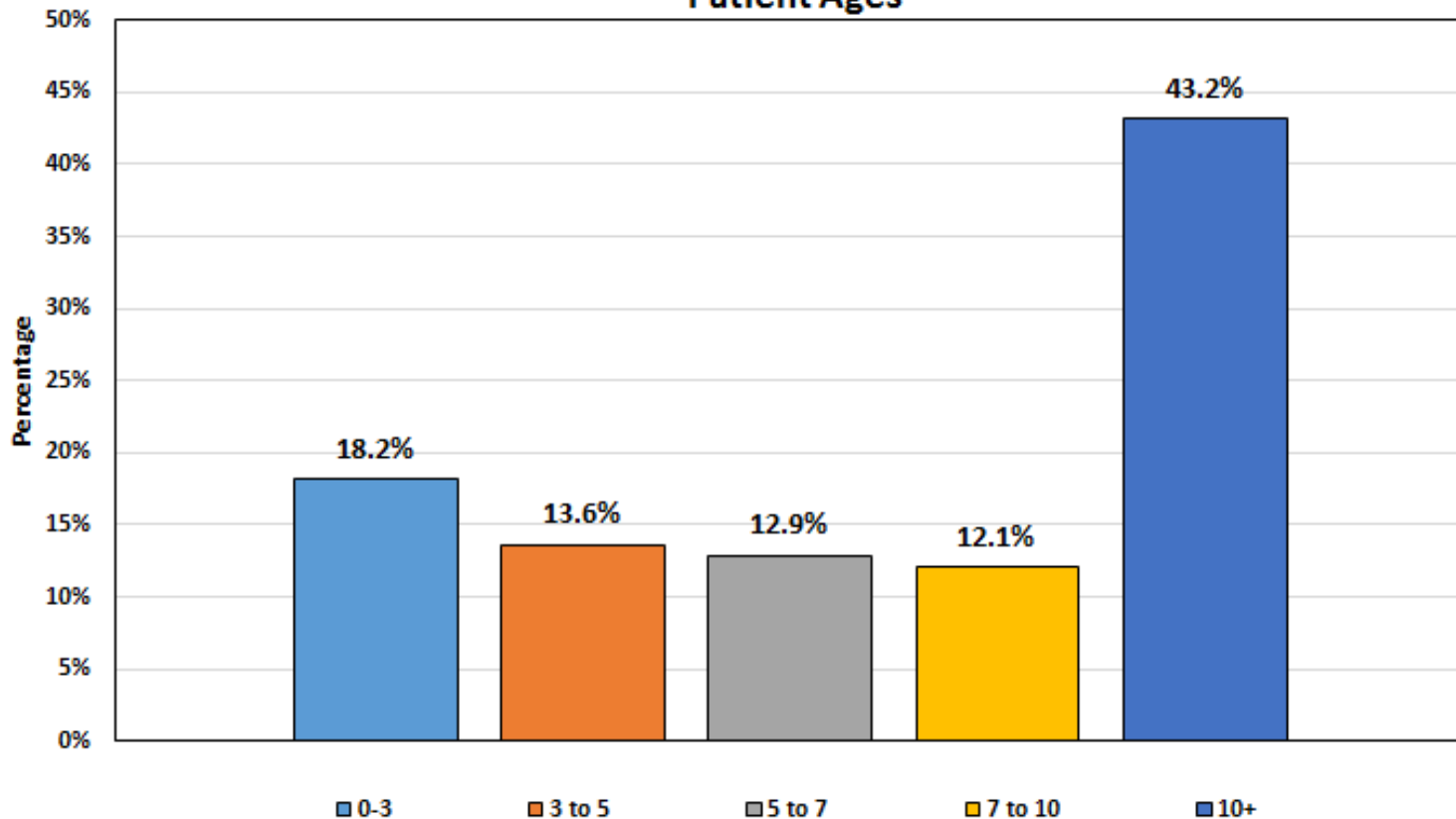
The following graphs and descriptions provide you with more detail about who we serve and how well we do.



What does this mean?

The graph above shows that we have children with a wide variety of diagnoses. Our skilled team tailors the treatment plan to provide the best care for you and your child.

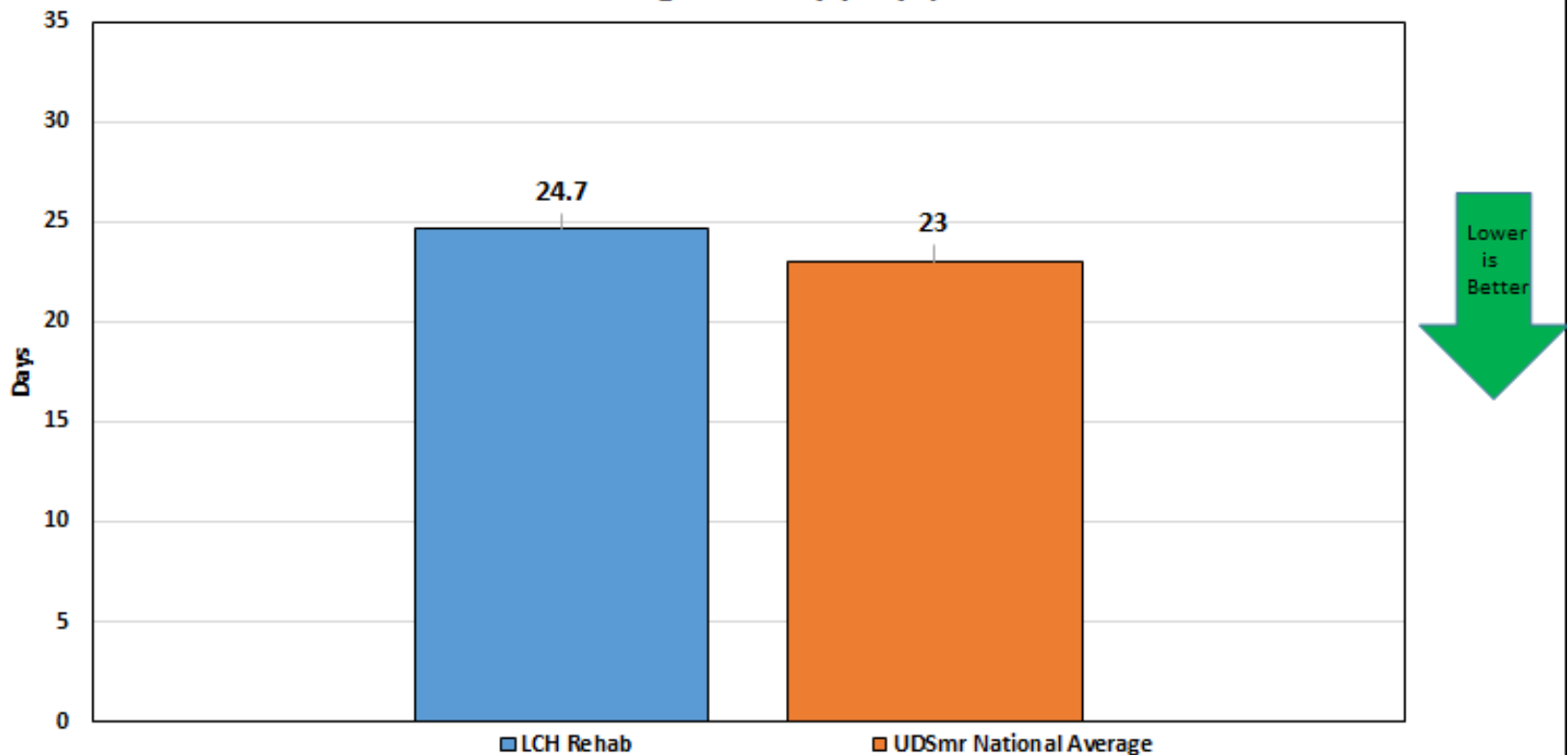
### 2017 Levine Children's Hospital Pediatric Rehabilitation Patient Ages



#### Why is this important?

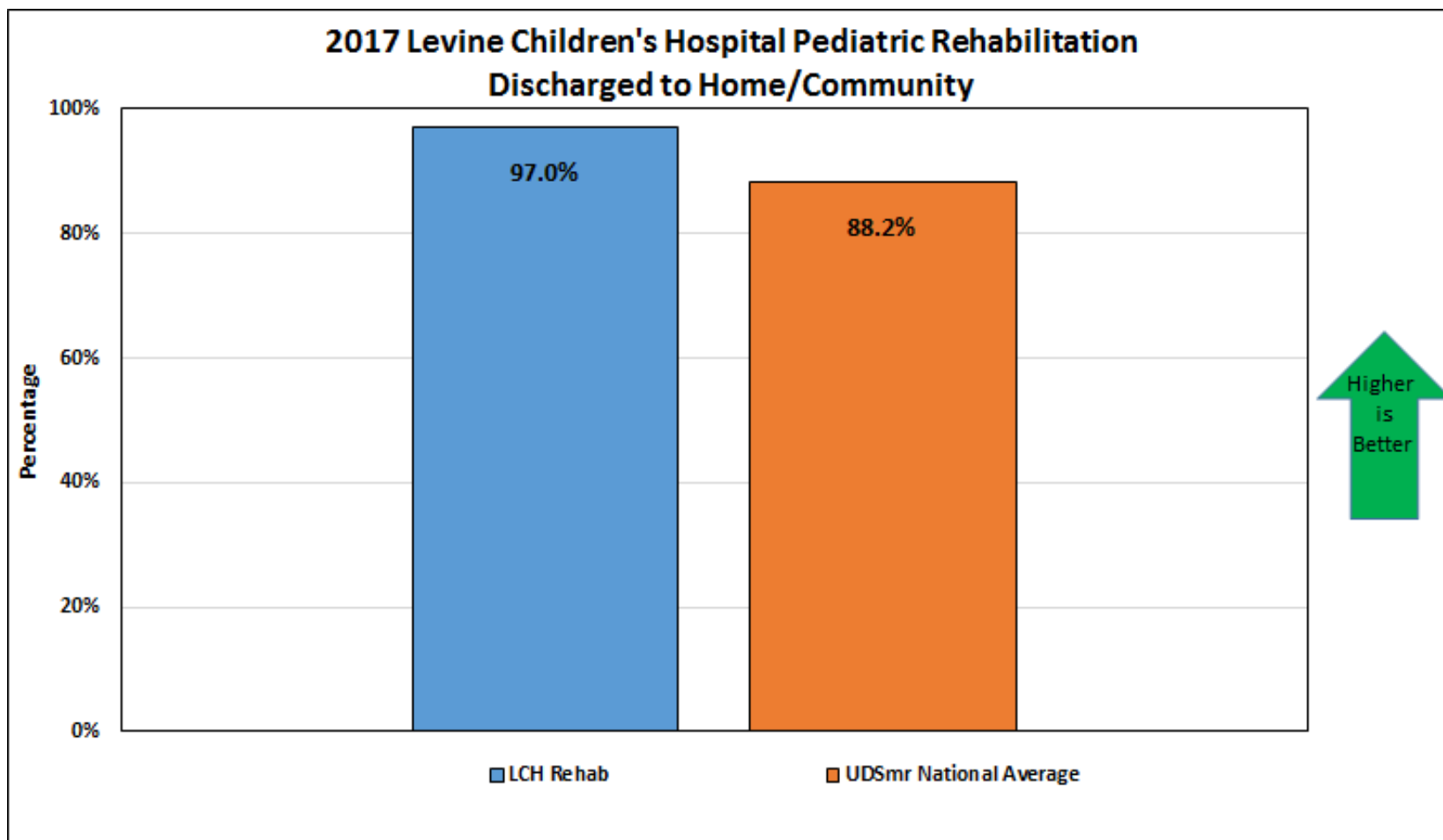
From the graph above, you can see that we serve a wide range of ages. This gives all patients the opportunity to interact with others around the same age during their stay. Families and caregivers can also get to know each other, often sharing experiences and forming strong supportive relationships.

### 2017 Levine Children's Hospital Pediatric Rehabilitation Length of Stay (Days)



#### What does this mean?

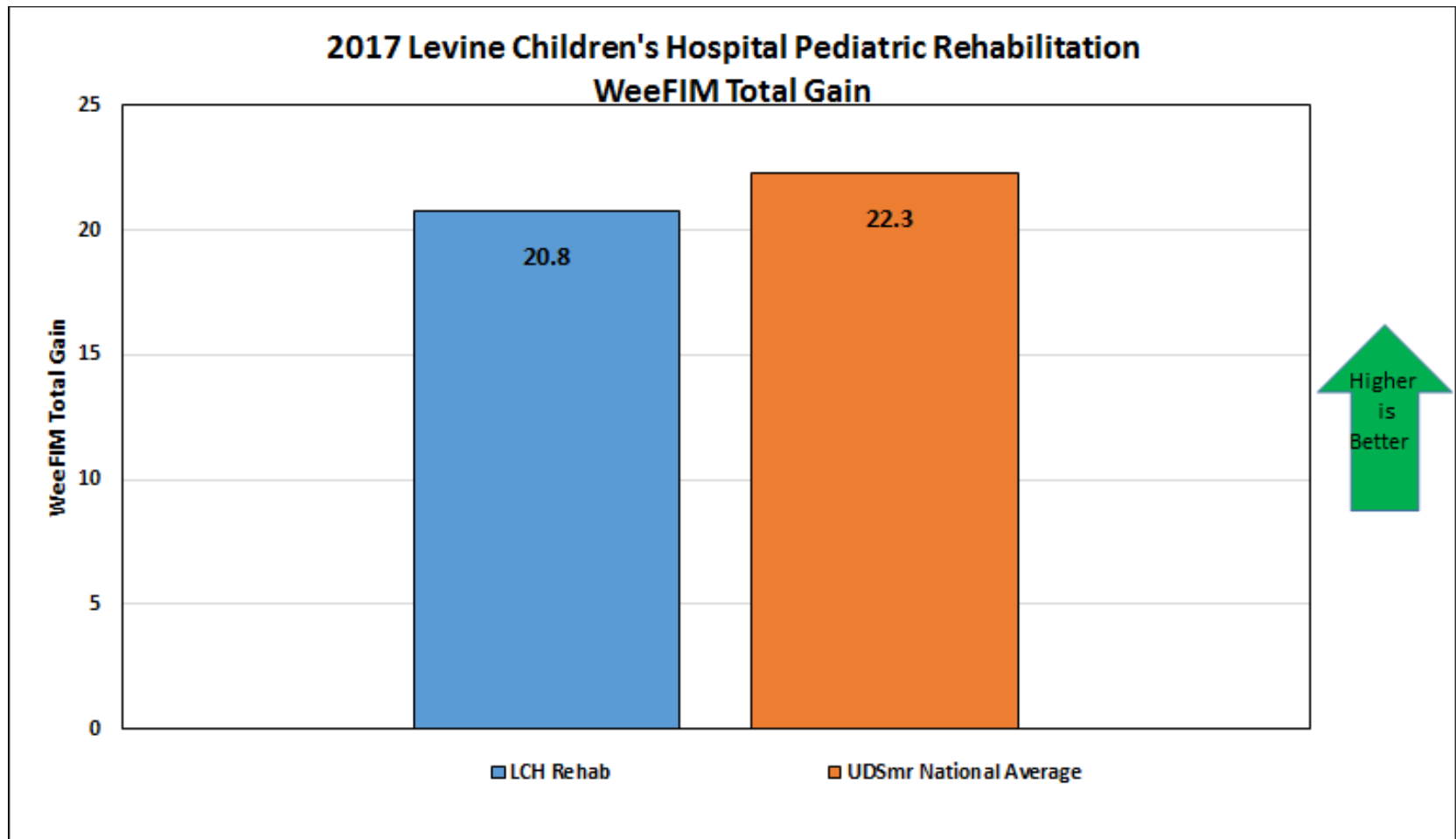
The graph above shows the average amount of time our children stay with us. The length of time will vary depending on your child's needs. For 2015, our average length of stay was just over 3 weeks which was 3.4 days less than the national average. This means our patients are able to reach their goals and go home sooner than the national average for pediatric rehabilitation facilities.



#### What does this mean to you?

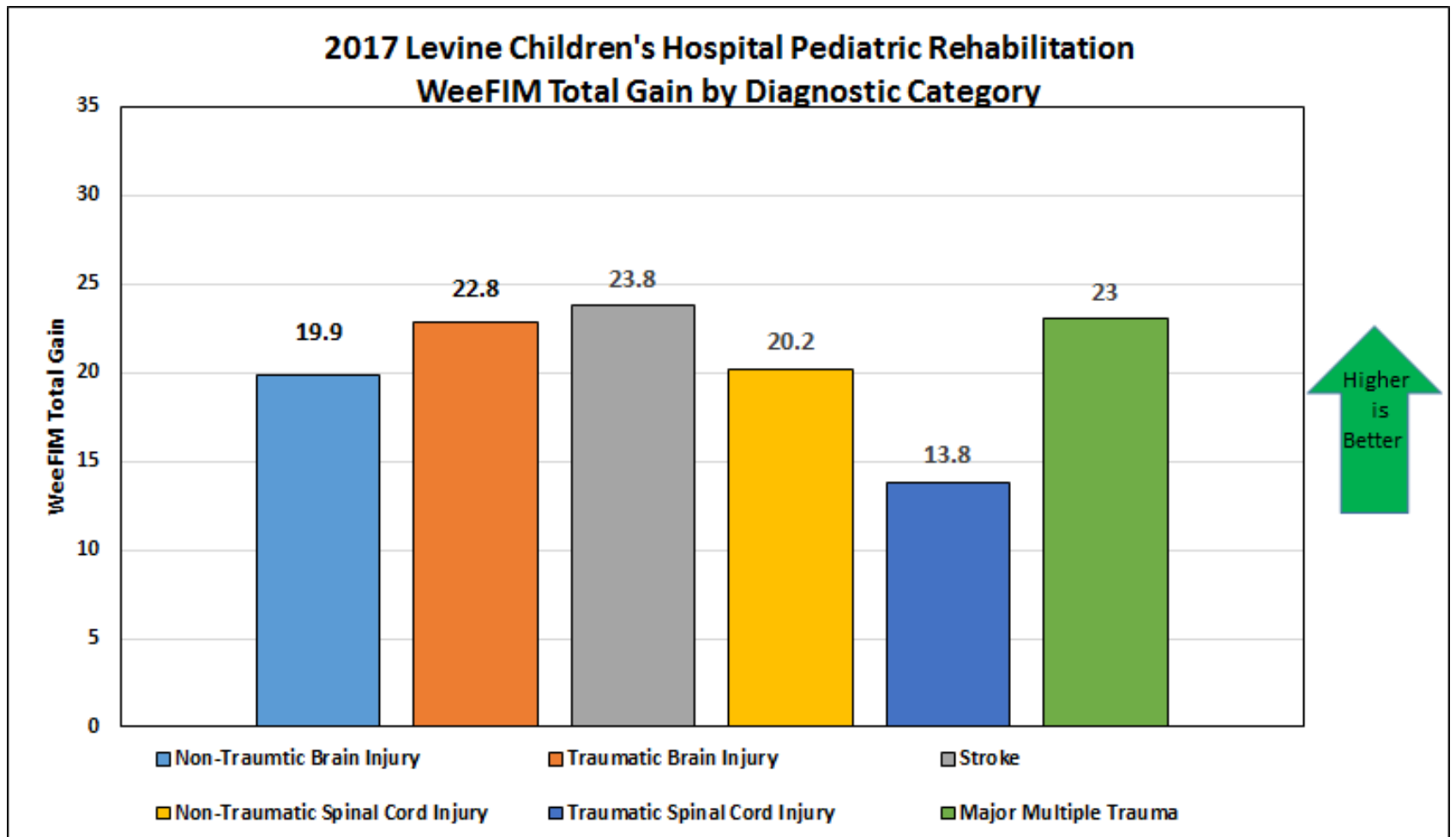
From the graph above, you can see that almost all of our children are able to return home with their family/or caregiver. Those that didn't went to other facilities. Our team uses the many resources available to prepare for and provide support as you transition home.

\* Excludes patients who had interrupted rehab stays due to acute care needs.



What does this mean?

This measurement helps us track the functional progress our patients make towards their goals. Whether our patients are with us for 2 weeks or 4 weeks we are always working to maximize their function and provide the necessary education to allow continued progress after rehab. See the next slide for more detailed information.

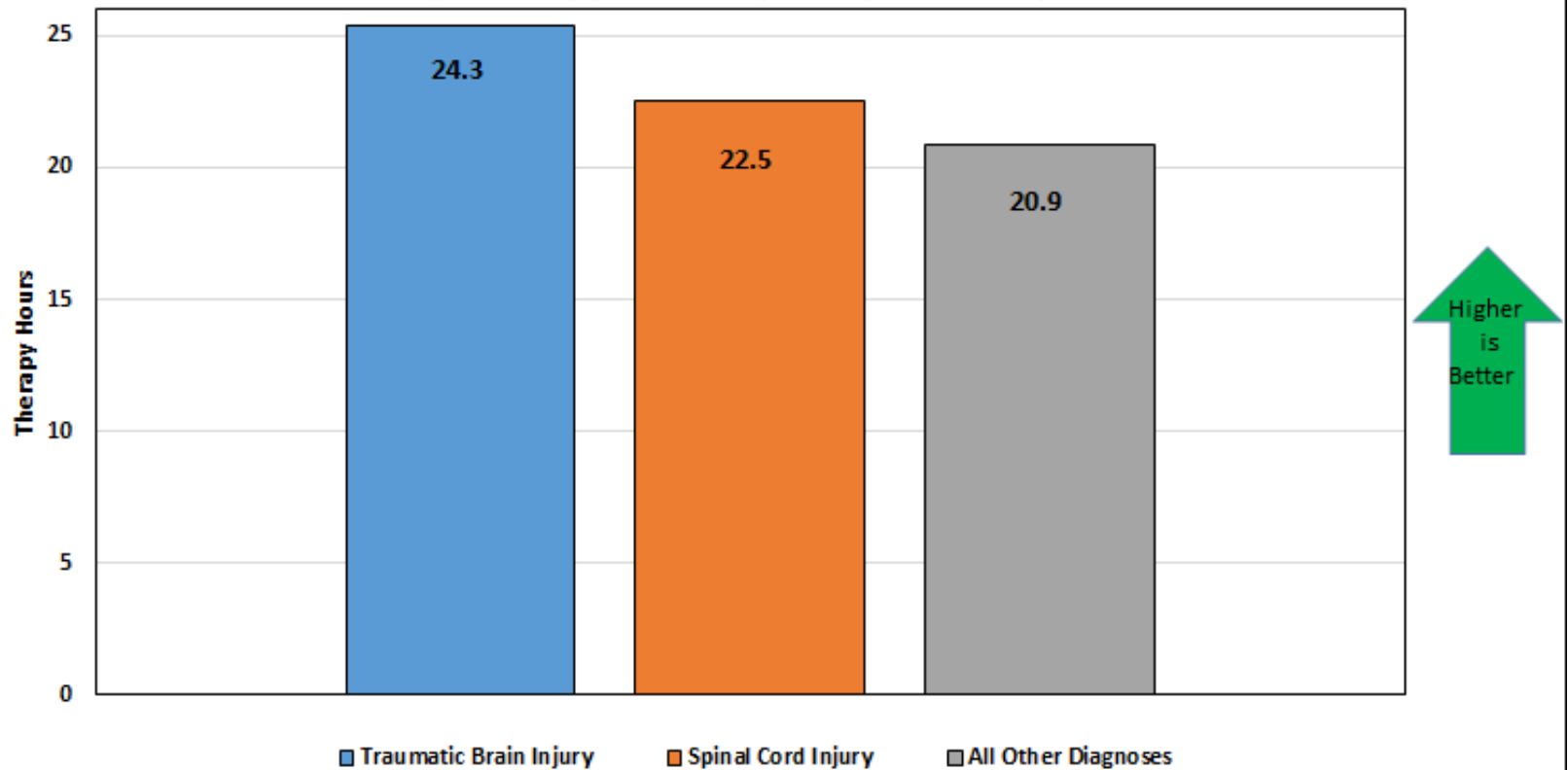


What does this mean?

This shows more detail about the functional gains divided into our most common diagnosis categories.



### 2017 Levine Children's Hospital Pediatric Rehabilitation Average Therapy Minutes (Hours) Provided per Week



What does this mean?

This measurement helps us track the amount of therapy our patients receive. We are always working to maximize therapy time provided and balance the needs of the patient on any given day. In addition to these hours patients may also spend time with Therapeutic Recreation, Child Life and the Teacher.

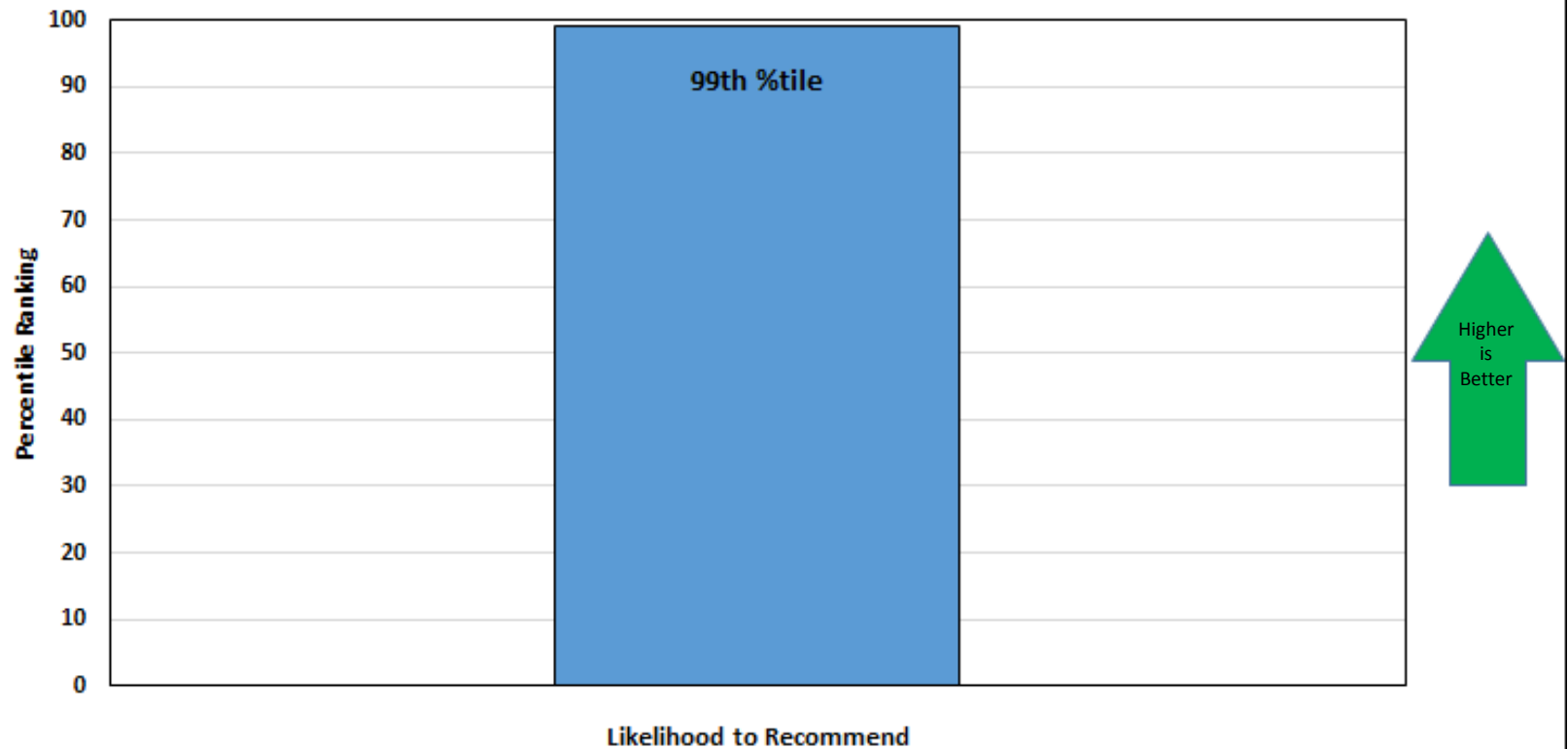
## 2017 Levine Children's Hospital Pediatric Rehabilitation Unplanned Transfers to Acute Care



What does this mean?

This measurement helps us track the number of patients who are transferred to the acute care setting during their rehabilitation stay. Though we are always working to minimize these transfers sometimes it is necessary. When appropriate, patients may return to the rehabilitation unit to complete their stay.

## 2017 Levine Children's Hospital Pediatric Rehabilitation Patient Satisfaction - Likelihood to Recommend



What does this mean?

This measurement helps us track the satisfaction of the rehabilitation stay by our persons served. We strive to maintain the highest ranking and utilize feedback on our surveys to make changes and improvements.