



Carolina's HealthCare System

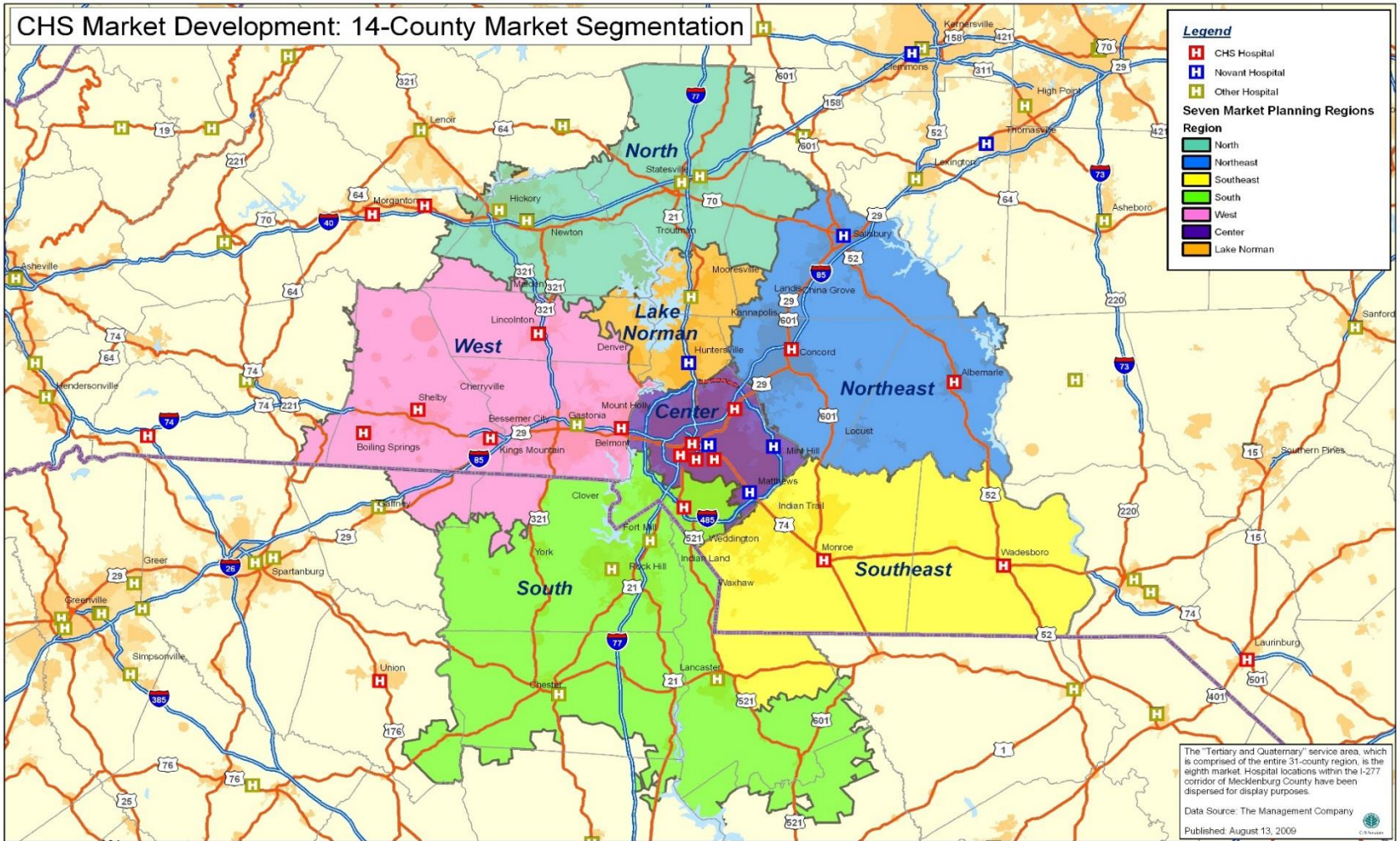
Carolina's HealthCare System Medical Group

One

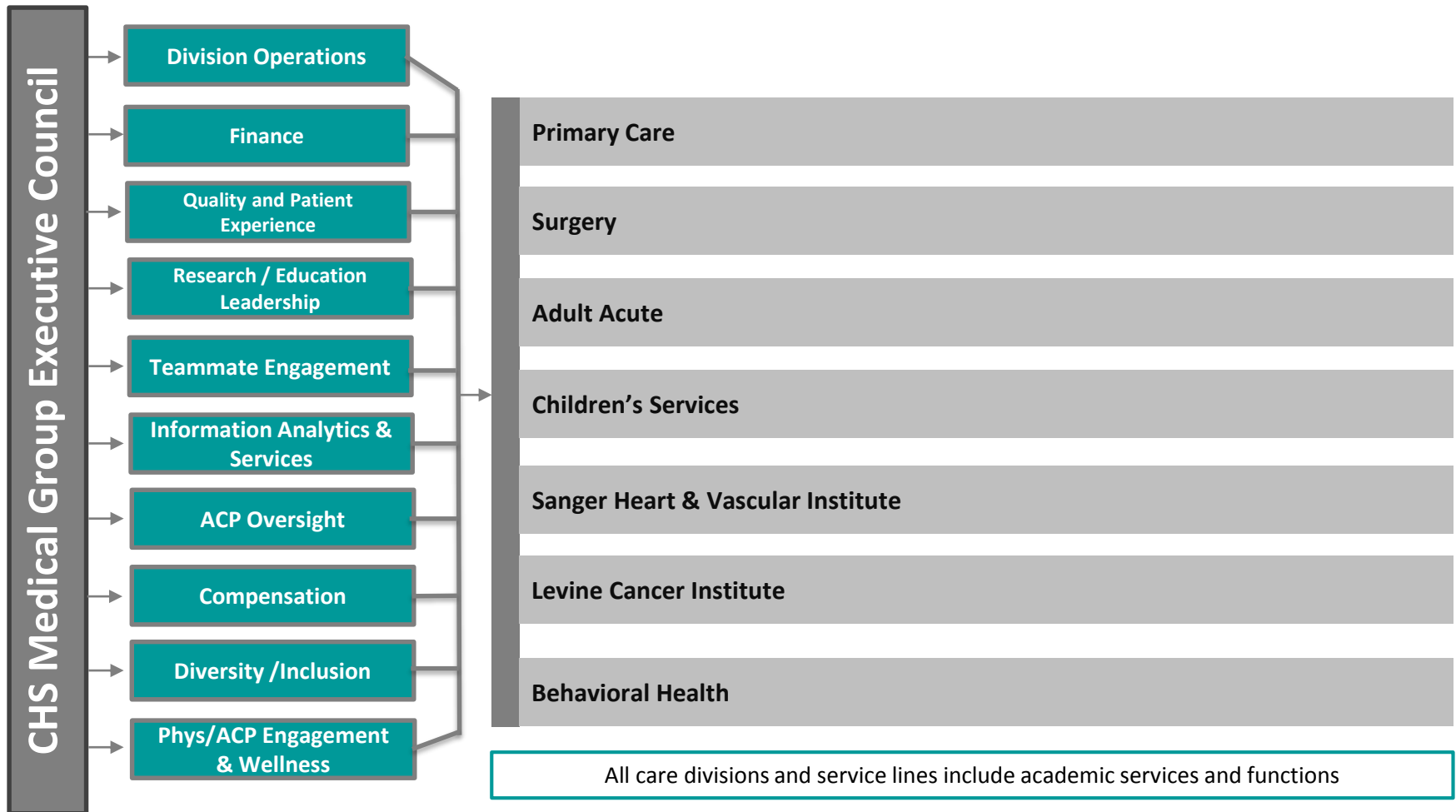
CHS Medical Group Division



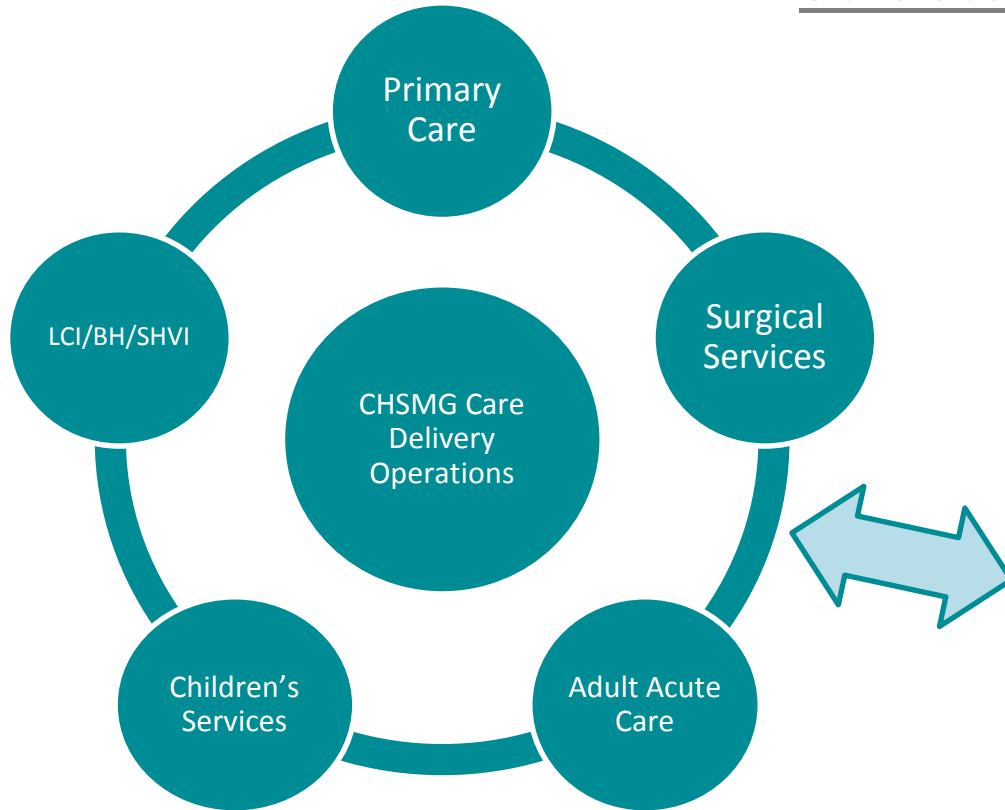
Integration of the CHS Medical Group throughout our Primary Service Area



CHS “System” Medical Group- Metro Market Structure



CHS Medical Group Division Matrix and Integrated Support Structure



1,800 Physicians

270 Residents

2,070 Total Physicians

Plus over 600 Advanced Clinical Practitioners (ACP)



Scope:

- Multiple Care Delivery Divisions
- Millions of Office Visits
- Hundreds of Locations
- **ONE VISION**

2/2/2017

CHS “System” Provider Regional Relationships

CHS Regional Medical Group

- Wilkes
- St. Lukes
- Scotland
- Columbus
- New Hanover

*Management Services Agreement
for Physician Network . Employed by
CHS.*

CHS Hospital Providers

- Blue Ridge
- Roper/St.
Francis
- AnMed Health
- Cone Health

*Providers are employed locally
not directly by CHS.*

CHS Medical Group Division Committees

- Division Operations
- Finance
- Quality and Patient Experience
- Education / Research / Leadership
- Teammate Engagement
- Information Analytics & Services
- ACP Oversight
- Compensation
- Diversity /Inclusion
- Phys/ACP Engagement & Wellness

- The CHS Medical Group Division Committee structure recently underwent a reorganization
- New Committee Chairs and members are currently being identified and charters are being developed

Wellness Subcommittee

The Wellness Subcommittee reports to the Physician & ACP Engagement & Wellness Committee and is charged with strategically increasing wellness, decreasing burnout, & improving the engagement of CHSMG Physicians by:

- Operationalizing the actions proposed by the Subcommittee.
 - Oversee implementation of low/no cost, high value programs (low hanging fruit!)
 - Evaluate, promote, support and develop high priority long range programs.
 - Develop tools to track current state and future outcomes
- Connecting efforts with physician leaders at all levels across the System.
- Collaborating with several CHS partners, including:
 - Center for Physician Leadership
 - Physician Recruitment and Retention
 - Human Resources
 - LiveWELL
 - The Patient Experience
 - Employee Assistance Program
 - IS
 - Other System resources